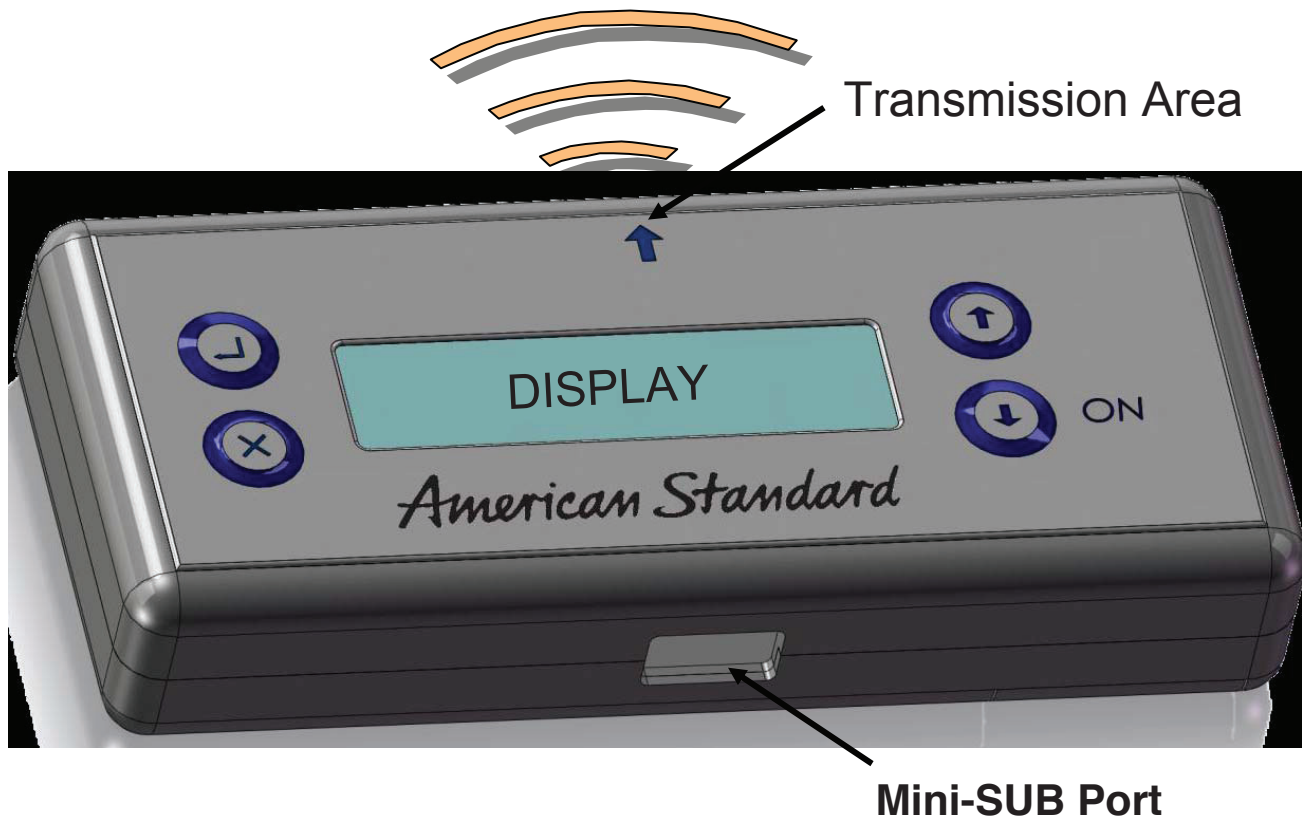


*American
Standard*

**Selectronic Remote Control
Operating Manual**

Software Version 1.6



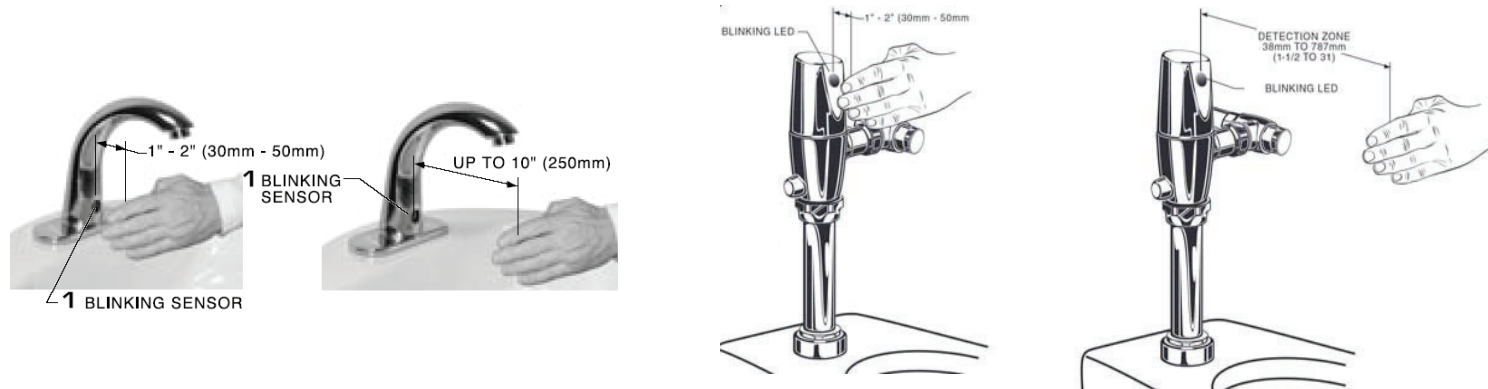
OPERATION: The remote programmer has 4 keys:

- ⏏ “Enter” or validate
- ⊗ “Cancel”
- ⬆ “Scroll UP”
- ⬇ “Scroll Down”

The ‘Down’ Key is also used to turn “ON” the remote programmer. After not being used for 2 minutes, the programmer automatically turns itself off.

Setting The Detection Distance

***** ONLY DONE AFTER SELECTING ALL THE MODE SETTINGS *****

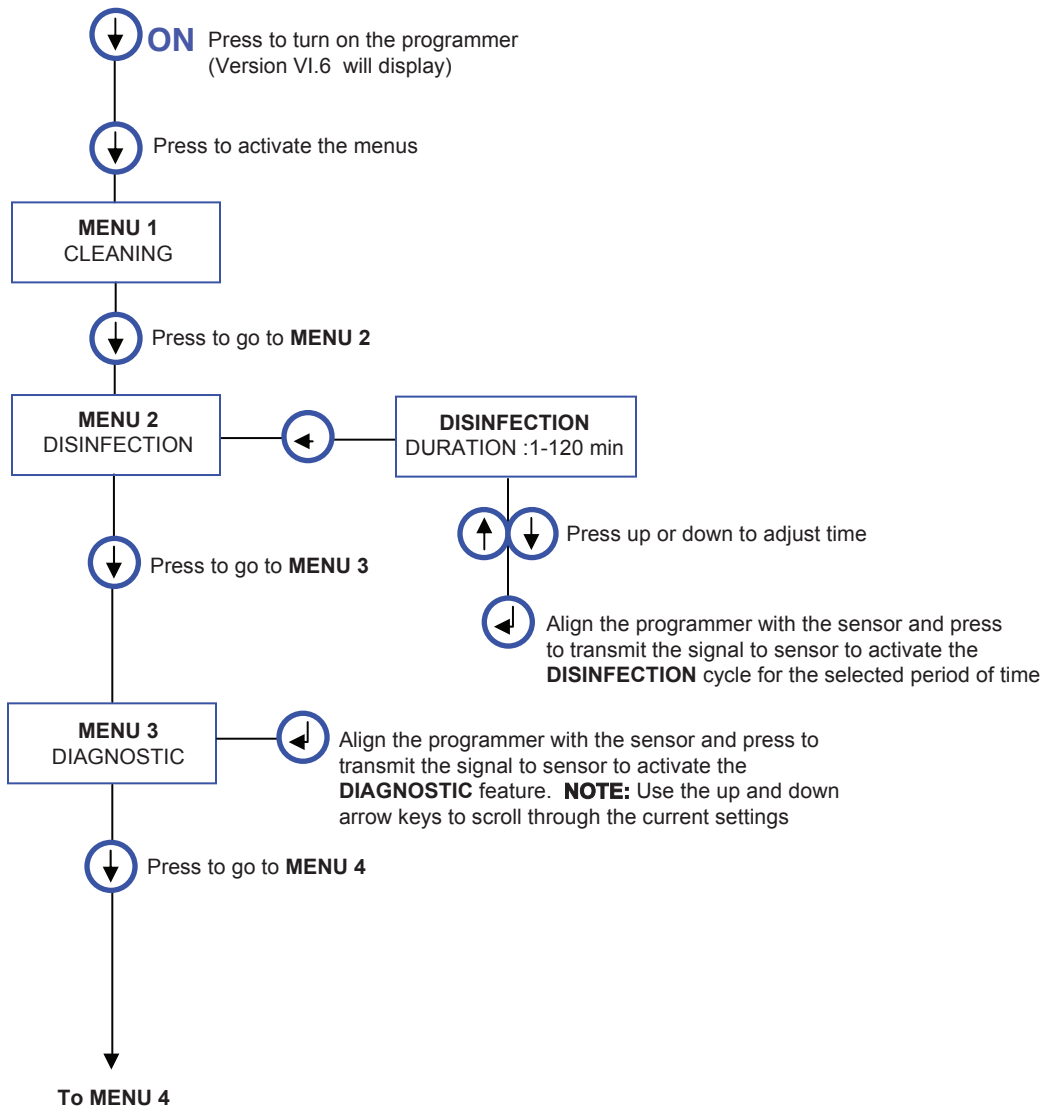


When using the programmer, the sensor will begin blinking for approximately 5 seconds after the “**ENTER**” key is pressed and the display shows “**TRANSMISSION OK**”.

While it is blinking move your finger to within 1 inch of the sensor (nearly covering it). When the light stops blinking and stays on steady, remove your finger and, with the palm of your hand facing the sensor, move your hand to the distance to be set. When the sensor starts to blink again, move your hand away from the detection area. The flashing will stop and the sensor will now be programmed with the new setting.

The Programmer will now display “**BACKUP FUNCTION**”. You can program the next sensor(s) by pointing the programmer at the sensor and pressing the “**ENTER**” key. The programmer will remember the programmed settings for approximately 3.5 minutes before turning off.

NOTE: See “Product Settings & Specifications Chart”

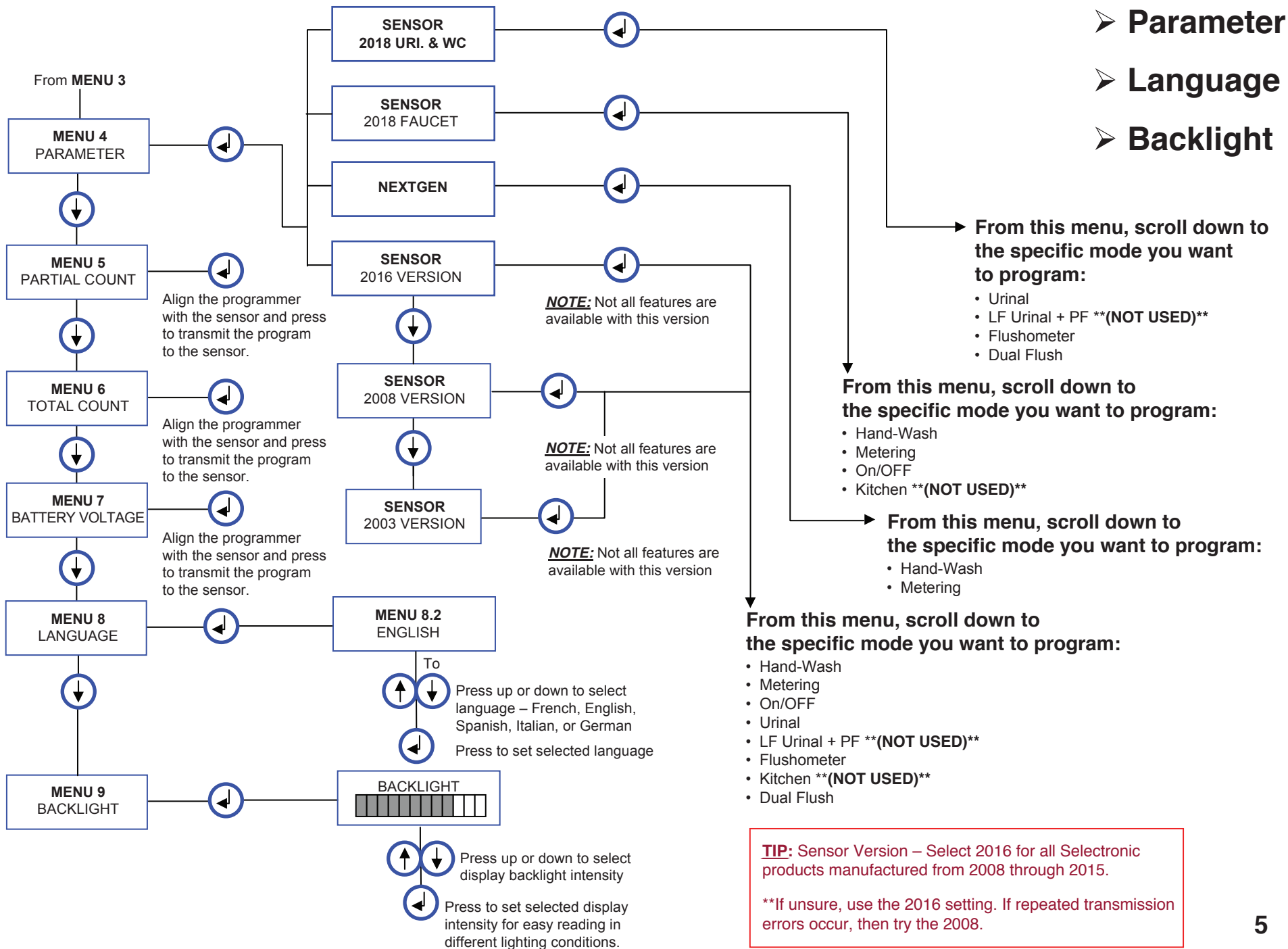


- **Start**
- **Cleaning**
- **Disinfection**
- **Diagnostics**

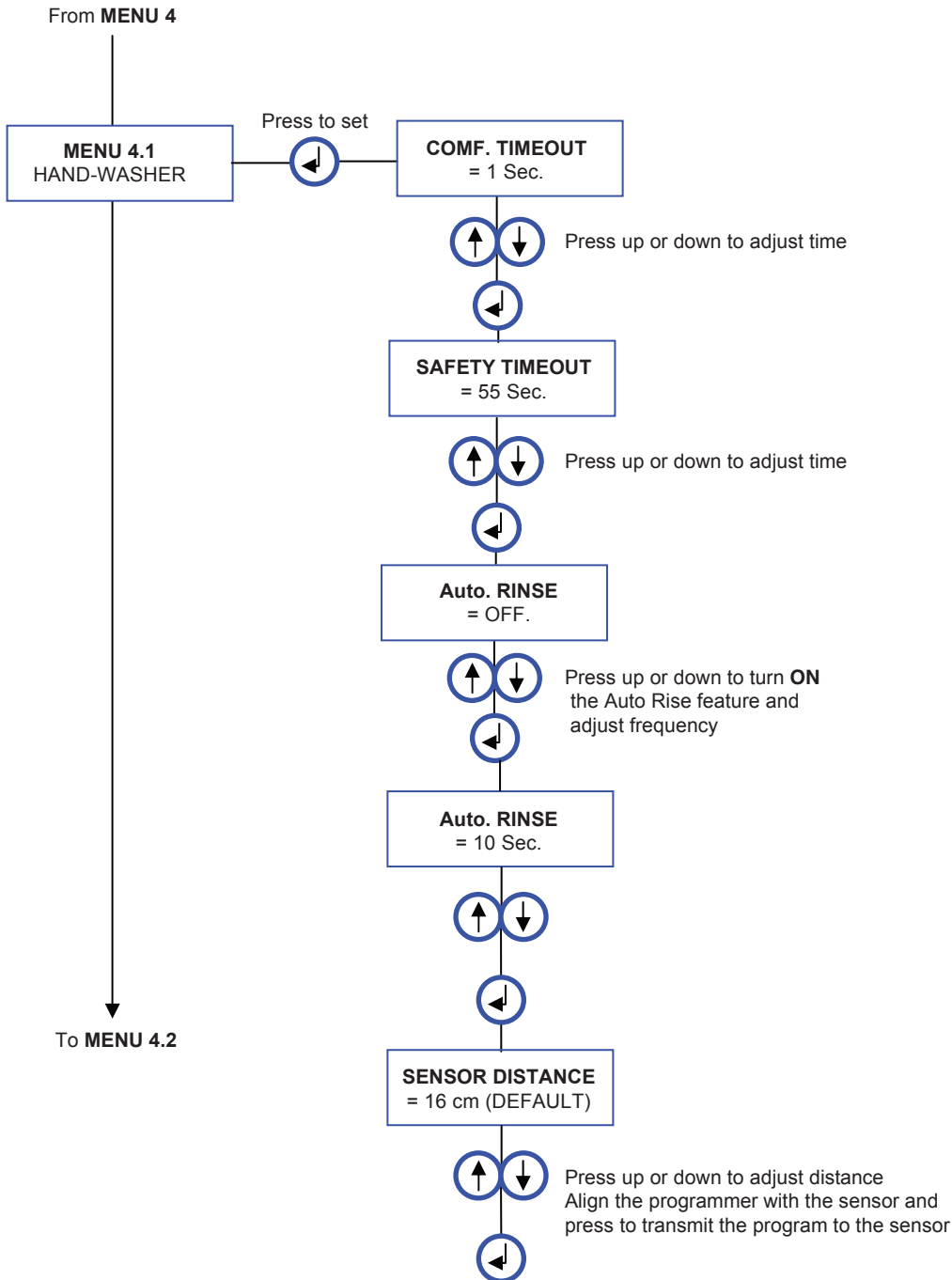
TIP: Cleaning – Use this mode to disable the sensor for 1 minute. This is sometimes used by the cleaning crew to keep the faucet “off” while cleaning the fitting and or fixture.

TIP: Disinfection – This is typically used in healthcare facilities that conduct periodic high temperature or high anti-bacterial chemical purging of the water lines. **The maintenance person should activate this mode and stay present to avoid any users from exposure to the purged water.** This ‘mode’ can be activated while in any function (hand-wash faucet, urinal flush valve, etc.). The duration (run time) can be programmed from 1 minute to 120 minutes in 1 minute intervals.

TIP: Diagnostics – Use this mode to determine the settings of the faucet or flush valve.
NOTE: this feature will only work with products manufactured starting in 2008.



NOTE: This is the standard 'instant on / instant off' faucet mode.



➤ Hand-Wash

Setting the sensor to the Hand-Wash faucet mode:

- Set the "Comfort Timeout"
- Set the "Safety Timeout"
- Set "Auto-Rinse" frequency (if the frequency is set to 0, "auto-rinsing" (auto-purging) is Off)
- Set the "Duration" (run time) of the auto-rinsing process.

TIP: The "COMF. TIMEOUT" is the (Comfort Timeout) determines how long the water will run after the users' hands are removed from the detection zone. This prevents the water from quickly turning ON & OFF as the user's hands move in & out of the detection zone.

Recommended setting: 1.5 sec

- Adjustable from 0 to 10 sec in 0.5 sec increments

TIP: The "SAFETY Timeout" is sometimes referred to as the 'Vandal Timer'. This should be set ON to prevent someone from intentionally blocking the eye (chewing gum, tape, etc) to keep the faucet running and have the sink overflow.

Recommended setting: 55 sec

- Adjustable from 5 to 120 sec in 5 sec increments

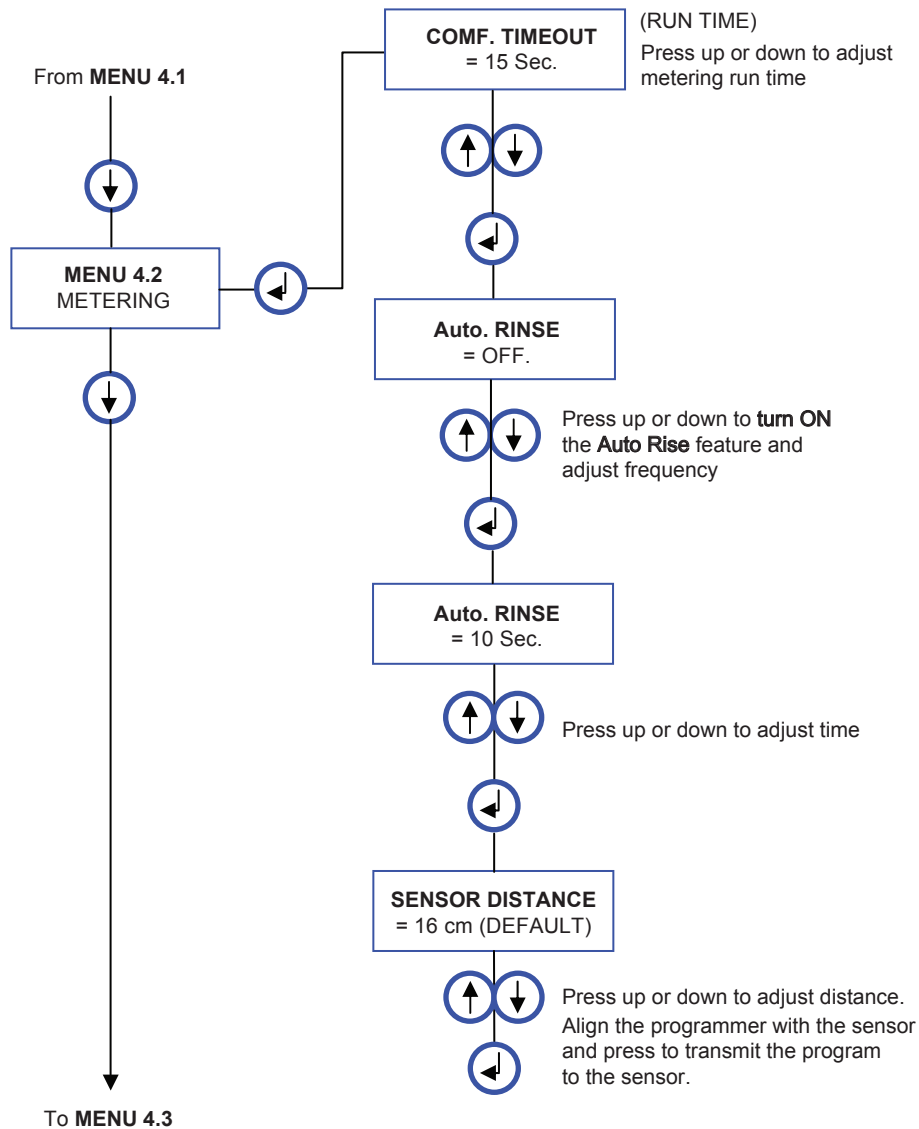
TIP: The "Auto. RINSE" (Auto Purge) allows the faucet to automatically turn ON after a set time period of non-use, preventing the water from becoming stagnant.

Default Setting: 'OFF'

- This time period can be set to activate from 1 to 72 hrs (of non-use) in 1 hr increments.
- The duration of run time can be set from 1 sec. to 240 sec.

TIP: The "SENSOR DIST." (Sensor Distance) is the maximum distance that the sensor can detect a user. (**Recommended setting for Hand-Wash faucet is 16 cm**)

➤ Metering -- *Faucet*



Setting the sensor to the Metering faucet mode:

- Set the "Comfort Timeout" (run time)
- Set "Auto-Rinse" frequency (if the frequency is set to 0, 'auto-rinsing' (auto-purging) is Off)
- Set the "Duration" (run time) of the auto-rinsing process.

TIP: In this Metering Mode, the "COMF. TIMEOUT" (Comfort Timeout) is the **RUN TIME** - how long the water will run once activated by the user.

- **Run Times:** 1, 2, 3.25, 7.5, 10, 15, 30, 60, 120, or 240 seconds

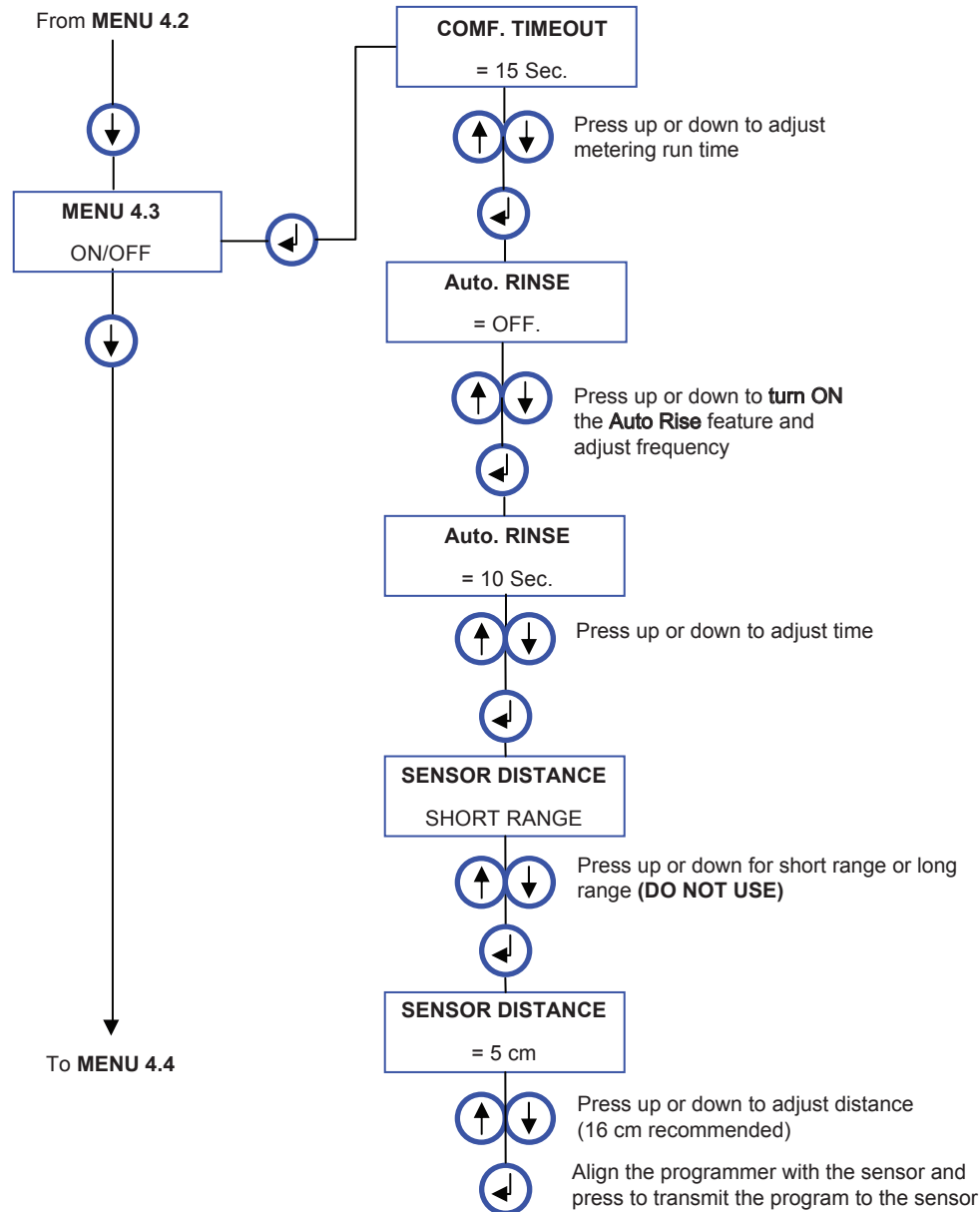
TIP: The "Auto. RINSE" (Auto Purge) allows the faucet to automatically turn ON after a set time period of non-use, preventing the water from becoming stagnant.

Default Setting: 'OFF'

- This time period can be set to activate from 1 to 72 hrs (of non-use) in 1 hr increments.
- The duration of run time can be set from 1 sec. to 240 sec.

TIP: The "SENSOR DIST." (Sensor Distance) is the maximum distance that the sensor can detect a user. (**Recommended setting for Metering faucet is 16 cm**)

NOTE: This is actually uses the **Metering** mode, but with the added feature of being able to start and stop the water flow before the metering time runs out.



➤ Metering with On/Off -- *Faucet*

Setting the sensor to the Metering faucet mode:

- Set the "**Comfort Timeout**" (run time)
- Set "**Auto-Rinse**" frequency (if the frequency is set to 0, 'auto-rinsing' (auto-purging) is Off)
- Set the "**Duration**" (run time) of the auto-rinsing process.

TIP: In this "Metering with On/Off Mode", the "**COMP. TIMEOUT**" is the **RUN TIME** - how long the water will run once activated by the user. The detection distance is set very short, so the user must start & stop the water by moving hands close to the sensor. - This is suited for gooseneck type fittings where the movement of the user may be outside the normal detection zone.

- **Run Times:** 3.25, 7.5, 10, 15, 30, 60, 120, or 240 seconds

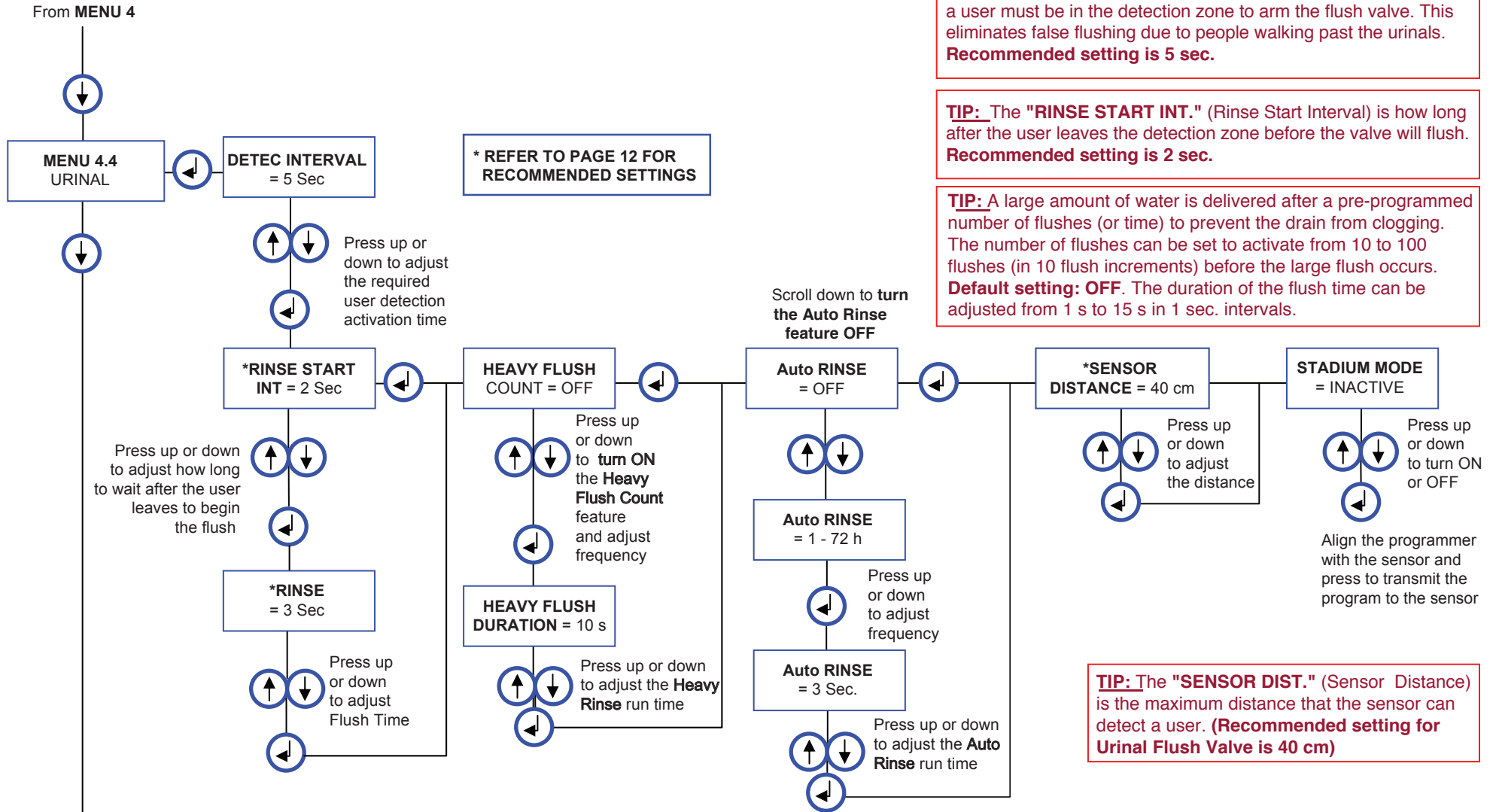
TIP: The "**Auto. RINSE**" (Auto Purge) allows the faucet to automatically turn ON after a set time period of non-use, maintaining the trap seal & preventing the water from becoming stagnant.

Default Setting: 'OFF'

- This time period can be set to activate from 1 to 72 hrs (of non-use) in 1 hr increments.
- The duration of run time can be set from 1 sec. to 240 sec.

TIP: The "**SENSOR DIST.**" (Sensor Distance) is the maximum distance that the sensor can detect a user. (**Recommended setting 5 cm**)

➤ Urinal -- Urinal Flush Valve



* REFER TO PAGE 12 FOR RECOMMENDED SETTINGS

TIP: The "DETEC. INTERVAL" (Detection Interval) is how long a user must be in the detection zone to arm the flush valve. This eliminates false flushing due to people walking past the urinals. **Recommended setting is 5 sec.**

TIP: The "RINSE START INT." (Rinse Start Interval) is how long after the user leaves the detection zone before the valve will flush. **Recommended setting is 2 sec.**

TIP: A large amount of water is delivered after a pre-programmed number of flushes (or time) to prevent the drain from clogging. The number of flushes can be set to activate from 10 to 100 flushes (in 10 flush increments) before the large flush occurs. **Default setting: OFF.** The duration of the flush time can be adjusted from 1 s to 15 s in 1 sec. intervals.

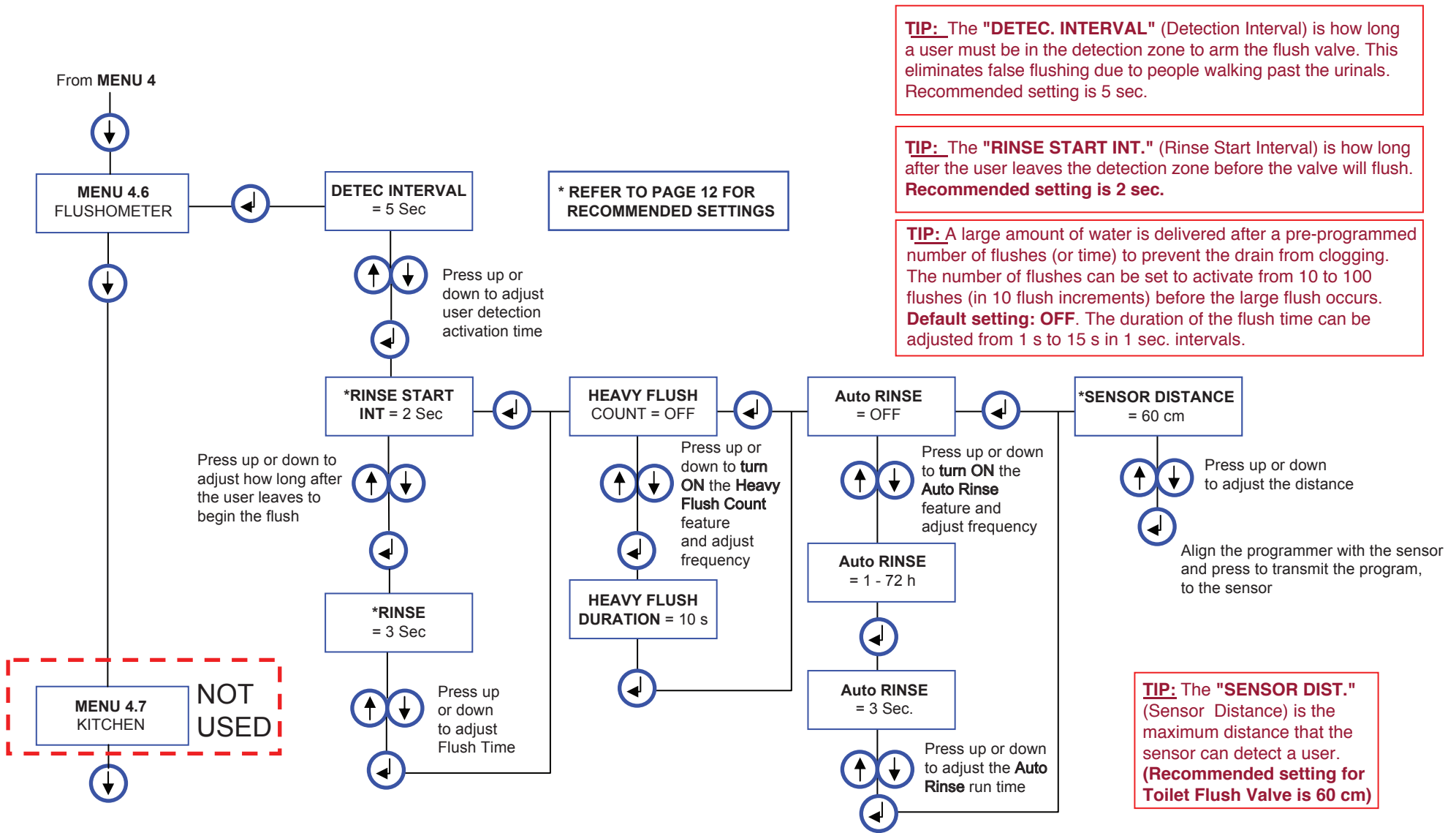
TIP: The "SENSOR DIST." (Sensor Distance) is the maximum distance that the sensor can detect a user. **(Recommended setting for Urinal Flush Valve is 40 cm)**

TIP: The "Rinse" is the Flush Time (Flush Duration). **See Flush Valve Settings Chart**

TIP: The "STADIUM MODE" feature automatically switches to flush every 2 minutes during periods of heavy usage (2 sec between users) and return to normal when there are more than 2 sec. between users.

TIP: The "Auto. RINSE" (Sanitary Flush) allows the flush valve to automatically flush, after a set time period of non-use, to maintain the trap seal. This time period can be set to activate from OFF to 72 hrs (of non-use) in 1 hr increments. You can set the duration of flush time from 1 sec. to 6 sec. – **never more than the fixture can drain before overflowing!** (Recommended setting is OFF unless prolonged non-use is expected – then 2 s should maintain the trap seal). **Default Setting: 'Off'**

➤ Flushometer – Toilet Flush Valve



TIP: The "DETEC. INTERVAL" (Detection Interval) is how long a user must be in the detection zone to arm the flush valve. This eliminates false flushing due to people walking past the urinals. Recommended setting is 5 sec.

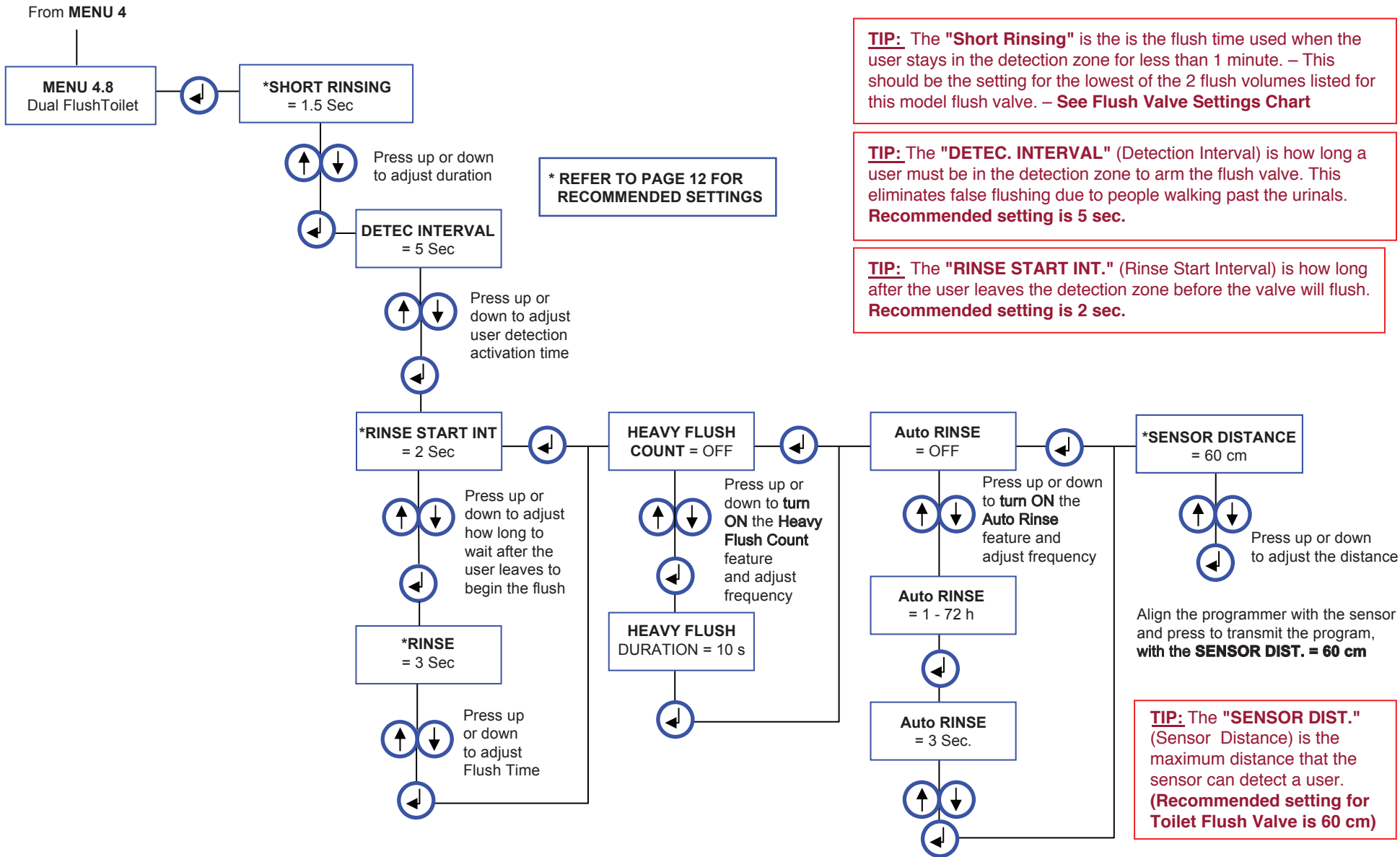
TIP: The "RINSE START INT." (Rinse Start Interval) is how long after the user leaves the detection zone before the valve will flush. Recommended setting is 2 sec.

TIP: A large amount of water is delivered after a pre-programmed number of flushes (or time) to prevent the drain from clogging. The number of flushes can be set to activate from 10 to 100 flushes (in 10 flush increments) before the large flush occurs. Default setting: OFF. The duration of the flush time can be adjusted from 1 s to 15 s in 1 sec. intervals.

TIP: The "Rinse" is the Flush Time (Flush Duration). See Flush Valve Settings Chart

TIP: The "Auto. RINSE" (Sanitary Flush) allows the flush valve to automatically flush, after a set time period of non-use, to maintain the trap seal. This time period can be set to activate from OFF to 72 hrs (of non-use) in 1 hr increments. You can set the duration of flush time from 1 sec. to 6 sec. – never more than the fixture can drain before overflowing! (Recommended setting is OFF unless prolonged non-use is expected – then 2 s should maintain the trap seal). Default Setting: 'Off'

➤ Dual Flush – Toilet Flush Valve



TIP: The "Short Rinsing" is the flush time used when the user stays in the detection zone for less than 1 minute. – This should be the setting for the lowest of the 2 flush volumes listed for this model flush valve. – **See Flush Valve Settings Chart**

TIP: The "DETEC. INTERVAL" (Detection Interval) is how long a user must be in the detection zone to arm the flush valve. This eliminates false flushing due to people walking past the urinals. **Recommended setting is 5 sec.**

TIP: The "RINSE START INT." (Rinse Start Interval) is how long after the user leaves the detection zone before the valve will flush. **Recommended setting is 2 sec.**

TIP: The "Rinse" is the Long Flush Time (Flush Duration) if the user stays in the detection zone for longer than 1 minute. **See the Flush Valve Settings Chart**

TIP: The "Auto. RINSE" (Sanitary Flush) allows the flush valve to automatically flush, after a set time period of non-use, to maintain the trap seal. This time period can be set to activate from OFF to 72 hrs (of non-use) in 1 hr increments. You can set the duration of flush time from 1 sec. to 10 sec. – **never more than the fixture can drain before overflowing! (Recommended setting is OFF unless prolonged non-use is expected –then 2 s should maintain the trap seal). Default Setting: 'Off'**

Flush Valve Settings

URINAL FLUSH VALVE SETTINGS					
Model (GPF)	Detect Interval	Rinse Start (Flush Start)	Rinse (Flush-Duration)	Auto Rinse (Sanitary Flush)	Auto Rinse (Run Time)
Innsbrook	5	2	8	OFF - 72 hr (in 1 hour increments)	2
1.0	5	2	8.25	OFF - 72 hr (in 1 hour increments)	2
0.5	5	2	4	OFF - 72 hr (in 1 hour increments)	1
0.25	5	2	2	OFF - 72 hr (in 1 hour increments)	1
0.125	5	2	1	OFF - 72 hr (in 1 hour increments)	1

TOILET FLUSH VALVE SETTINGS					
Model (GPF)	Detect Interval	Rinse Start (Flush Start)	Rinse (Flush-Duration)	Auto Rinse (Sanitary Flush)	Auto Rinse (Run Time)
1.6	5	2	3.75	OFF - 72 hr (in 1 hour increments)	2
1.28	5	2	3	OFF - 72 hr (in 1 hour increments)	2
1.1	5	2	2.5	OFF - 72 hr (in 1 hour increments)	2

DUAL-FLUSH VALVE SETTINGS						
Model (GPF)	Short Rinsing (Short Flush)	Detect Interval	Rinse Start (Flush Start)	Rinse (Flush-Duration)	Auto Rinse (Sanitary Flush)	Auto Rinse (Run Time)
1.6 / 1.1	2.5	5	2	3.75	OFF - 72 hr (in 1 hour increments)	2
1.28 / 1.1	2.5	5	2	3	OFF - 72 hr (in 1 hour increments)	2